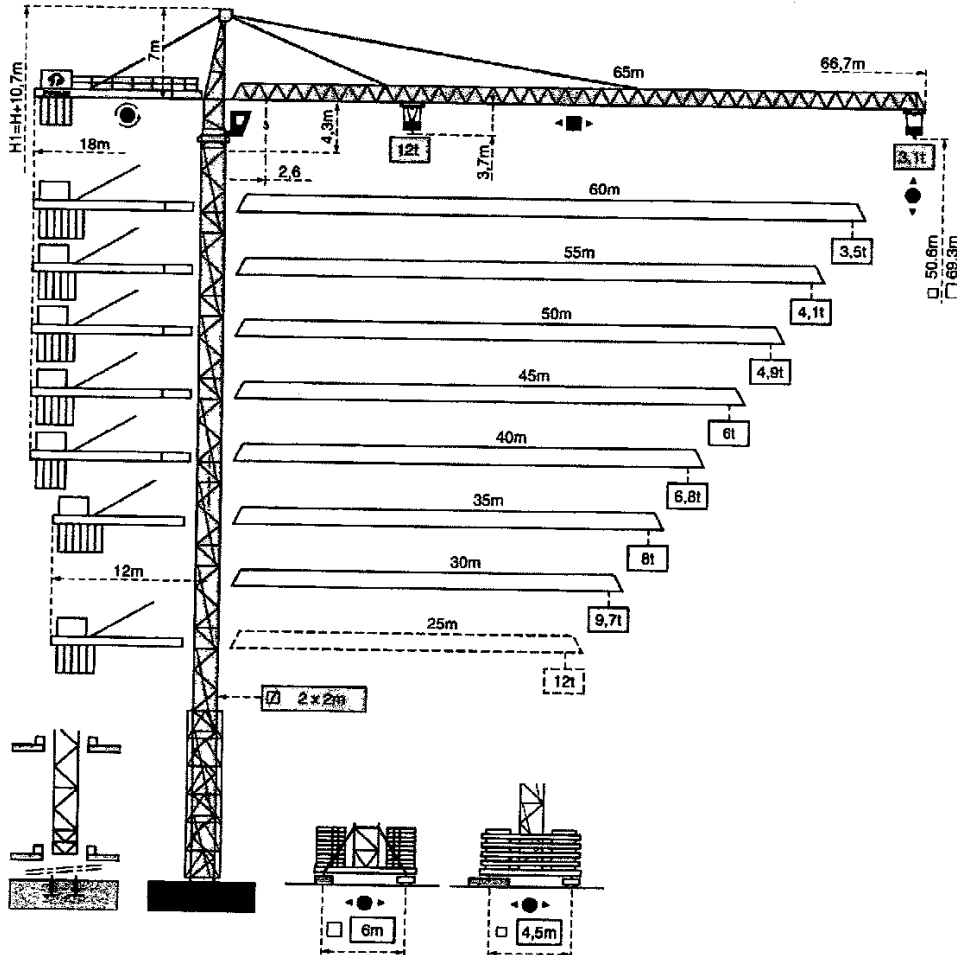


DATASHEET



TOPKIT MD 285

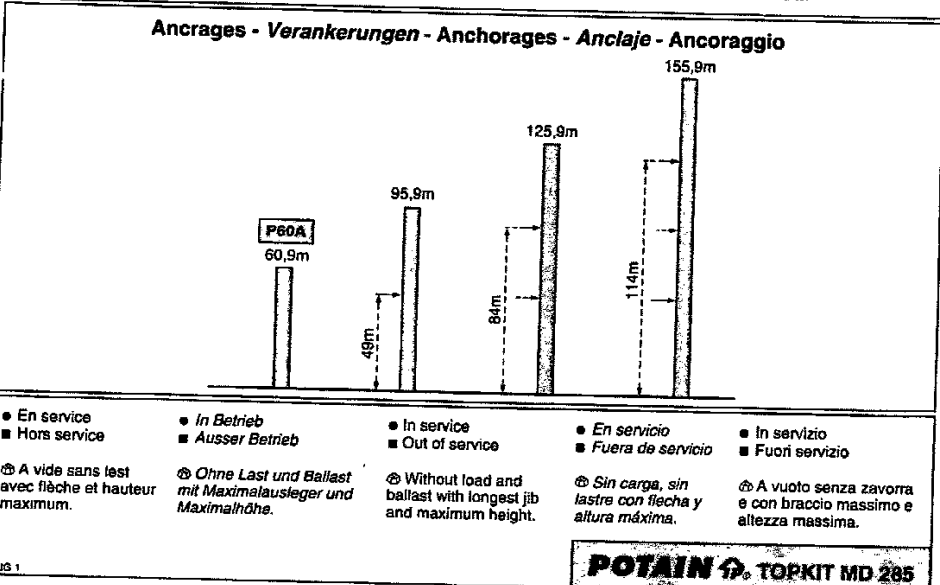
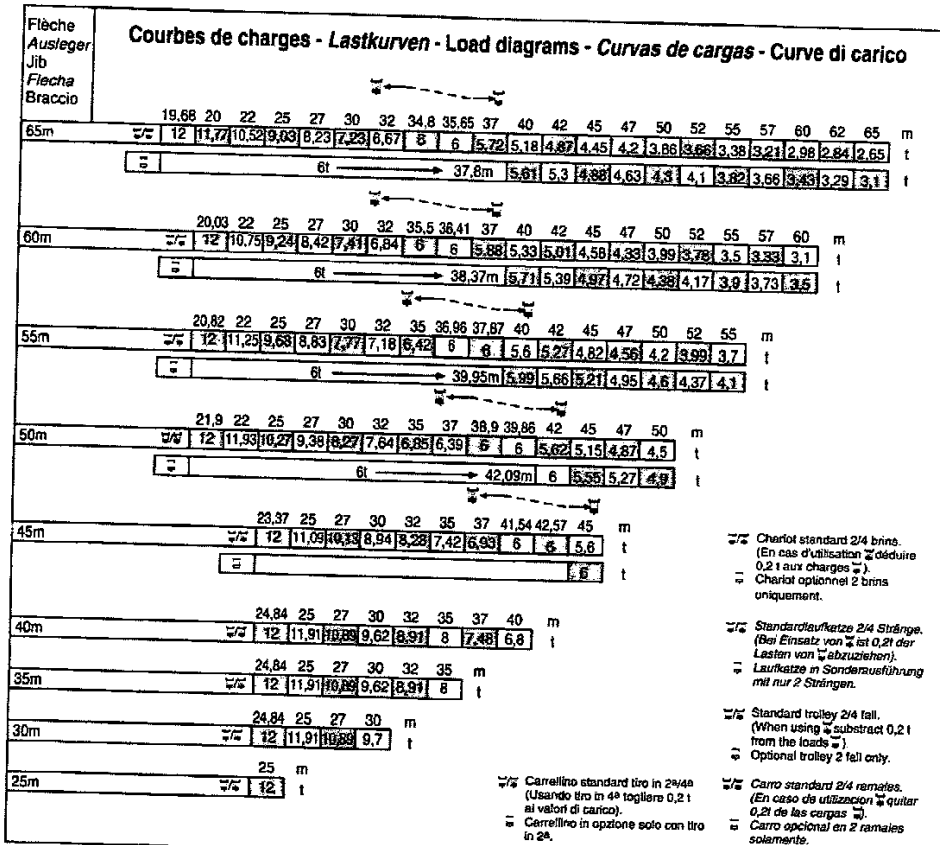


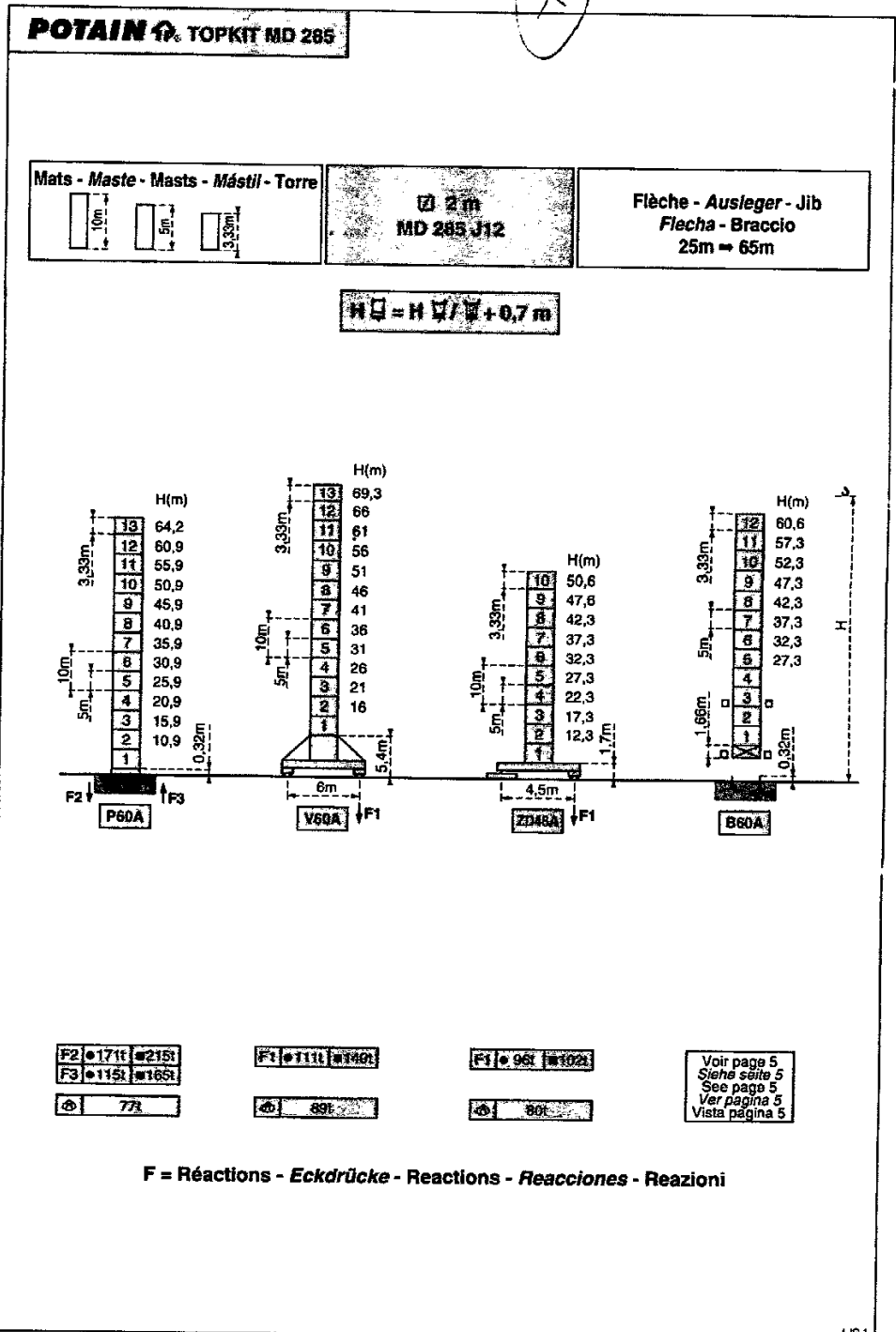
**TOPKIT MD 285**

U26.1

**POTAIN**




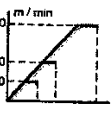







X

**Mécanismes - Antriebe - Mechanisms - Mecanismos - Meccanismi**

					m/min	t		ch-PS hp	kW		
<b>Levage</b> <b>Heben</b> <b>Hoisting</b> <b>Elevación</b> <b>Sollevarmento</b>			55								
			RCS	0=34	6	0=17	12		370m	55	40,5
			30D	0=68	3	0=34	6		>370m*		
			70	0=49	6	0=20	12		461m	70	51
			30D	0=80	3	0=40	6		>461m*		
<b>Distribution</b> <b>Katzfahren</b> <b>Trolleying</b> <b>Distribución</b> <b>Distribuzione</b>			6 D3 V4			10-80-80		6	4,4		
<b>Orientation</b> <b>Schwenken</b> <b>Slewing</b> <b>Orientación</b> <b>Rotazione</b>			RCV 185			0=3,8 10-80-80 rpm		2x8	2x5,2		
<b>Translation</b> <b>Kranfahren</b> <b>Travelling</b> <b>Traslación</b> <b>Traslazione</b>		ZD 46 A	RT 443 A1 2V		15-30			4x5	4x3,7		
		V 60 A	RT 544 A1 2V		13,5-27			4x7	4x5,2		
		R ≥ 13m	TCV 649 ARC	H ≤ 41m		10-50		4x6,8	4x5		
Réseau - Netzstrom - Mains supply - Red - Rete elettrica							CEI 38 IEC 38	400V(+6%-10%) 50 Hz			
Puissance électrique nécessaire - Anschlusswert - Necessary electric power							55 RCS : 80 KVA				
Potencia eléctrica necesaria - Potenza elettrica necessaria							70 RCS : 105 KVA				
Groupe électrogène - Stromaggregat - Generator set - Grupo electrogeno - Gruppo elettrogeno											

\*Nous consulter - Auf Anfrage - Consult us - Consultarnos-Consultateci

Conforme aux directives CEE 84/534 et 87/405 sur le niveau acoustique - Gemäss EWG-Richtlinien 84/534 und 87/405 für den Schall- Leistungspegel  
 In compliance with the EEC 84/534 and 87/405 instructions on noise level - Conforme con las directivas CEE 84/534 y 87/405 sobre el nivel acústico  
 Conforme alle direttive CEE 84/534 e 87/405 sul livello acustico



NF E 52081 - 82 LIG 1

**POTAIN** TOPKIT MD 285