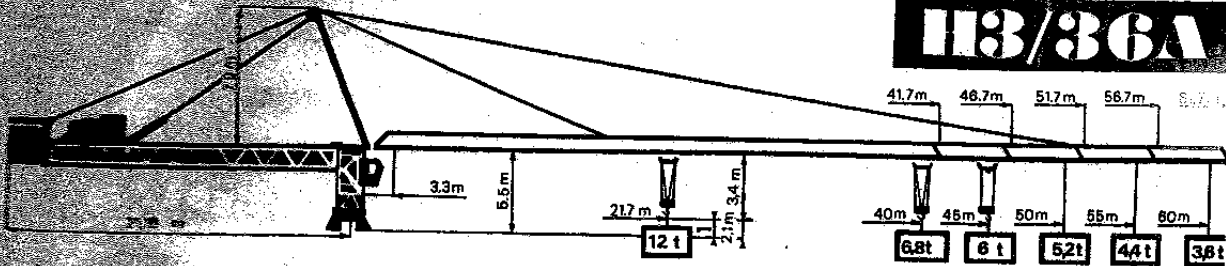




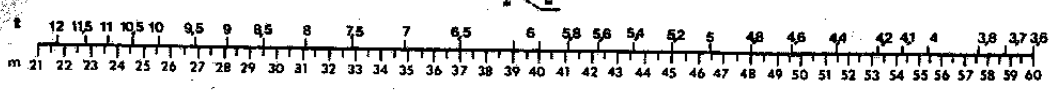
113/36A



0.2 t

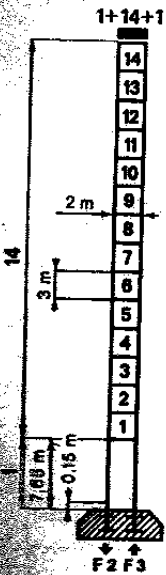
364/DM

Roue/pb 60m



PA 654

VA 654

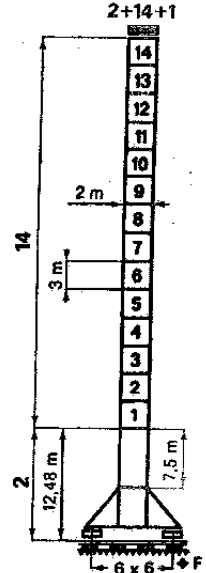


H (m)	W
51,7	
48,7	
45,7	
42,7	
39,7	
36,7	
33,7	
30,7	
27,7	
24,7	
21,7	
18,7	
15,7	
12,7	

F2	● 135 t	■ 140 t
F3	● 88 t	■ 94 t
	①	77,5 t
	②	76,5 t

F1	● 85 t	● 95 t
	①	93 t
	②	92 t

H (m)	W
56,6	
53,6	
50,6	
47,6	
44,6	
41,6	
38,6	
35,6	
32,6	
29,6	
26,6	
23,6	
20,6	
17,6	



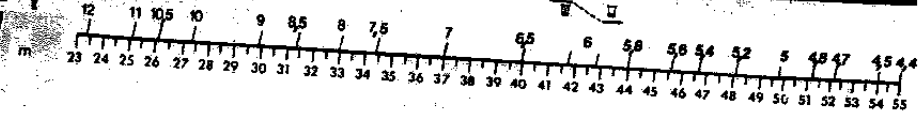
● en service - in service ■ hors service - out of service
 H > H maxi : nous consulter - contact us

		m / mn	t	capacité maxi maxi capacity
		0 → 96	3	410 m
		0 → 48	6	
		0 → 192	1,5	
		0 → 48	6	
		0 → 24	12	
		0 → 96	3	
		0 → 52	3	281 m
		0 → 26	6	
		0 → 26	6	
		0 → 13	12	

	OMD 85	0 → 0,9 tr/mn rpm	2 x 12 ch/hp
	RCC 83	0 → 60 m/mn	9 ch/hp
	RT 645	27 m/mn	4 x 5 ch/hp
	RTTP 645-2V	15-30 m/mn	4 x 5 ch/hp
	RCT 646	12/60 m/mn	4 x 6,5 ch/hp
R mini : 12 m	● normal-normal	●● rapide - fast	H ≤ 2 + 9 + 1
380 V 50 Hz	réseau - mains supply	① 120 KVA	groupe électrogène generator unit
		② 75 KVA	nous consulter consult us

W=V-0,2 t

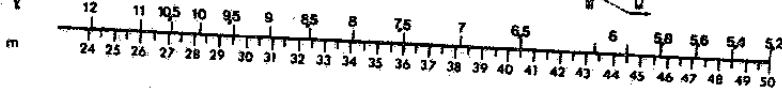
SM/DM



Flèche Jib 55m

W=V-0,2 t

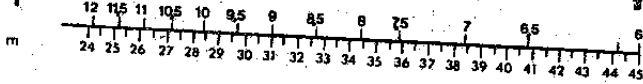
SM/DM



Flèche Jib 50m

W=V-0,2 t

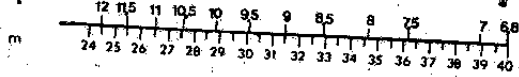
SM/DM



Flèche Jib 45m

W=V-0,2 t

SM/DM

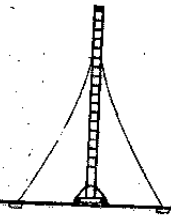
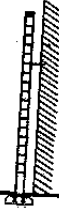
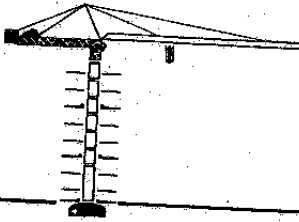


Flèche Jib 40m

hauteur, sous crochet théorique: obtenus flèche horizontale garde fin de course de 0,70 m entre moufle et chariot

hook height theoretical: obtained horizontal jib limit switch protection distance of 0,70 m between pulley and trolley

implantations spéciales: nous consulter
special mounting possibilities: consult us

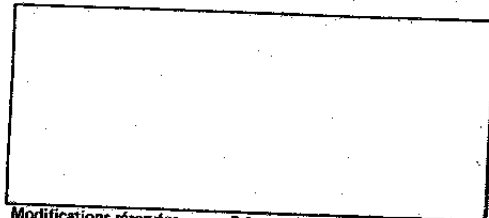


Potain

B.P. 173 - F 69130 ECULLY - Route de Charbonnières
Tél. (78) 33.81.81 + - Télex 330179

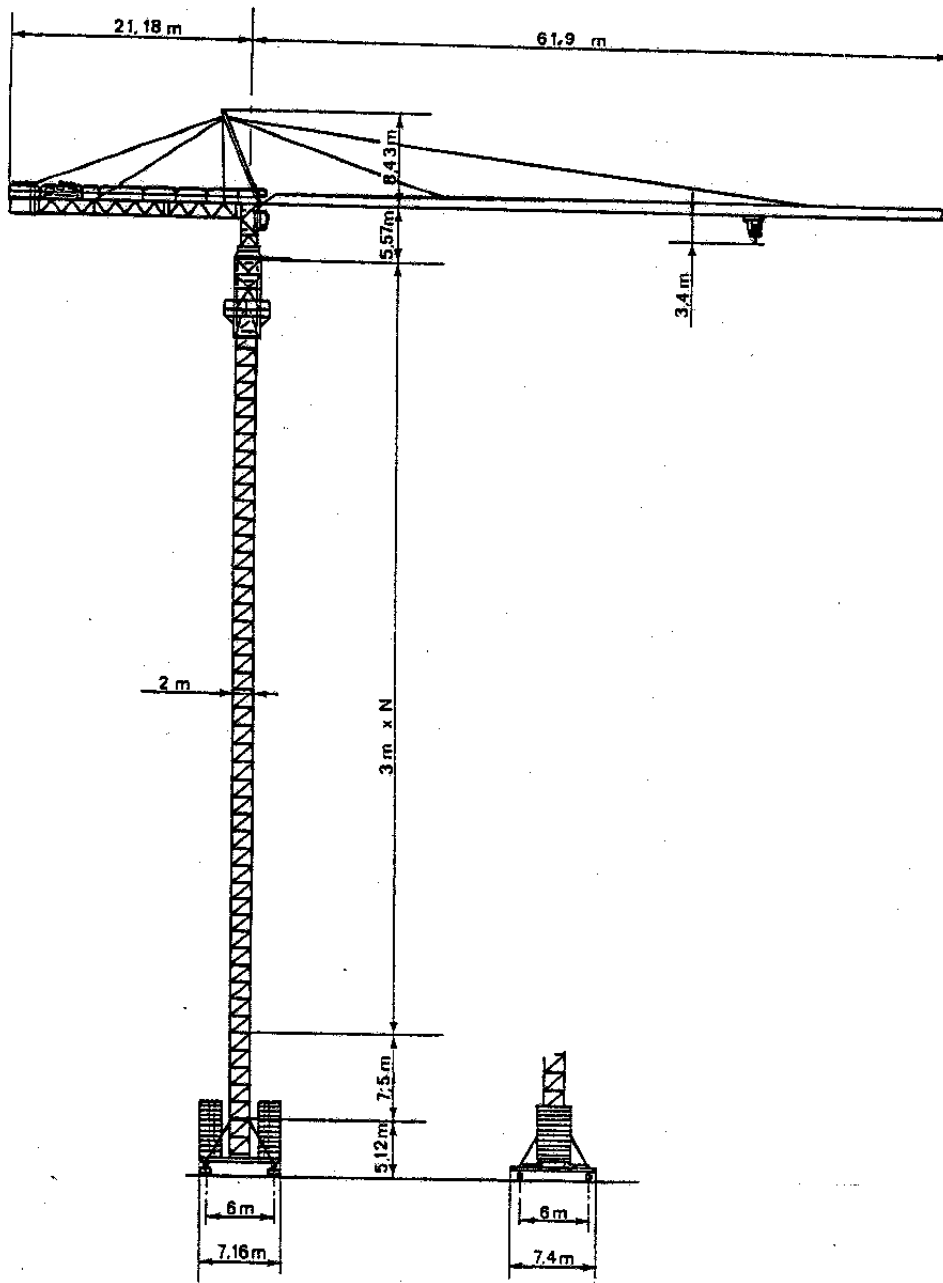
AGENCES:
Paris - Lyon - Marseille - Rennes - Strasbourg - Toulouse - Nancy

EXPORT: 89, Avenue du Président Roosevelt
F 94150 CHEVILLY-LARUE - Tél. (1) 687.22.23 - Télex 270001

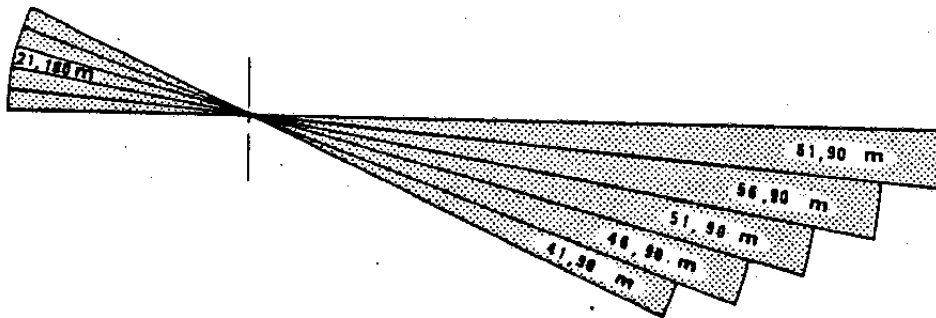
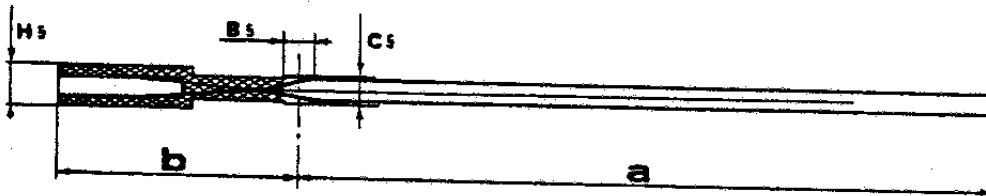
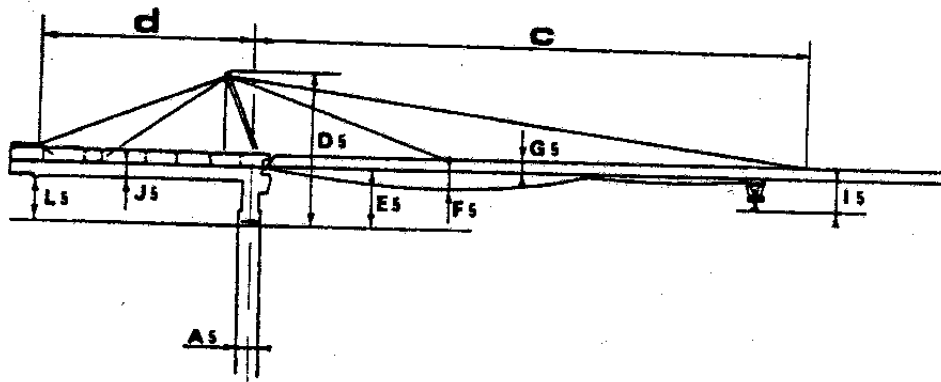


Modifications réservées
Subject to modification

Printed in France - Réf. 816 ELZ 1

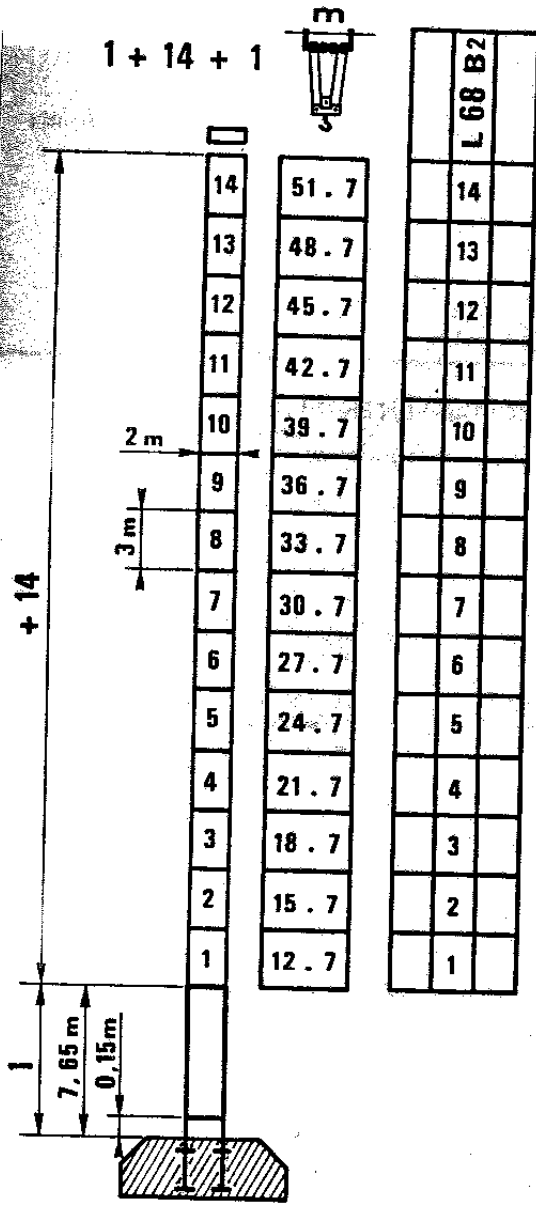


2 A 0 011 40/a

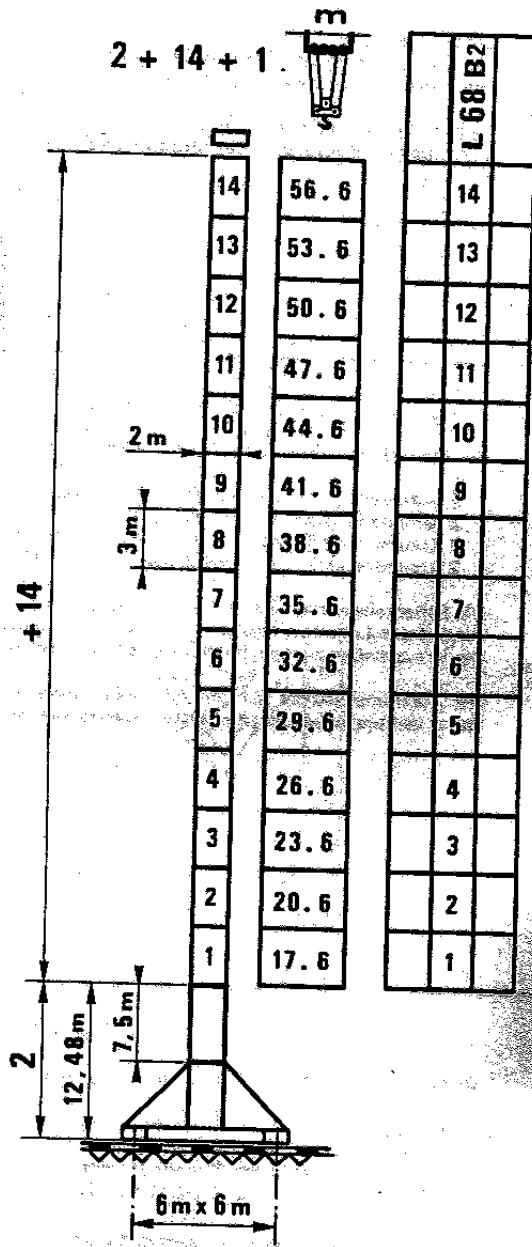


Rp.	PA-SA	PA-VA	
A5		2.180 m	
B5		2.580 m	
C5		2.580 m	
D5		14.000 m	
E5		5.470 m	
F5		2.790 m	
G5		1.300 m	
H5		3.100 m	
I5		3.400 m	
J5		1.400 m	
K5			
L5		4.065 m	

FLECHE AUSLEGER JIB	a	b	c	d
60 m	61.90 m	21.180 m	48.800 m	18.750 m
55 m	56.90 m	21.180 m	48.800 m	18.750 m
50 m	51.90 m	21.180 m	48.800 m	18.750 m
45 m	46.90 m	21.180 m	43.800 m	18.750 m
40 m	41.90 m	21.180 m	38.800 m	18.750 m
35 m				
30 m				



PA 654



VA 654